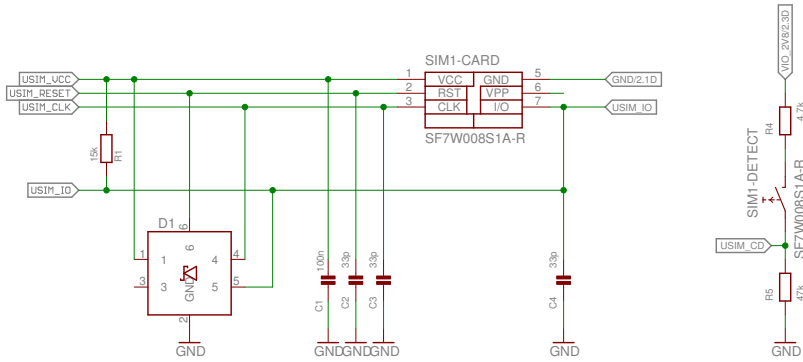
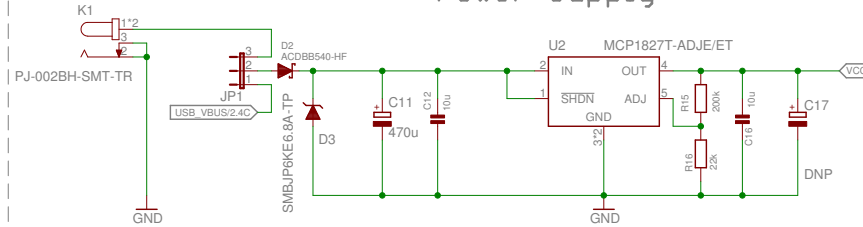


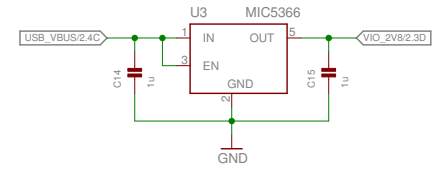
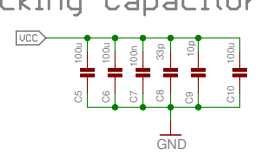
SIM Card Slot



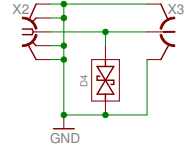
Power Supply



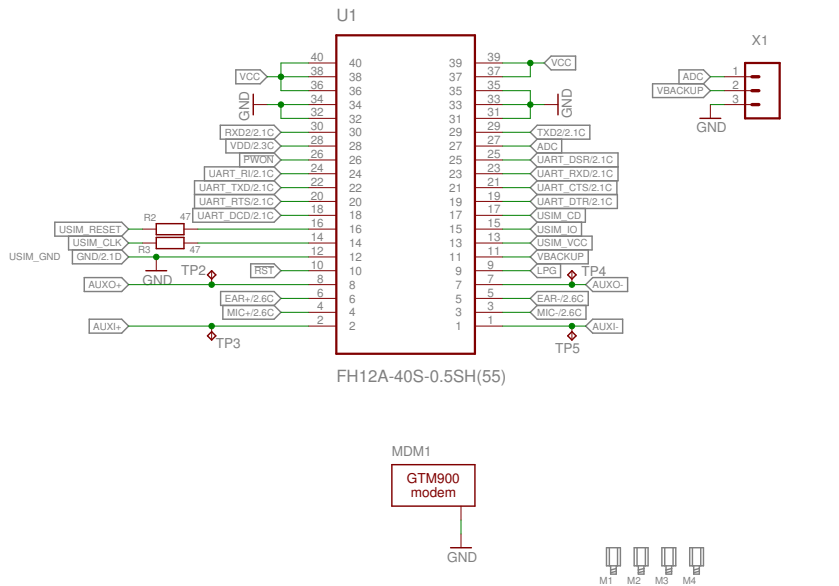
Blocking Capacitors



RF SMA-uFL



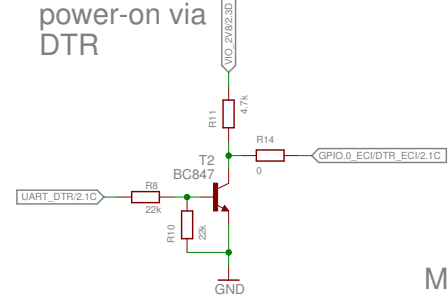
FPC socket



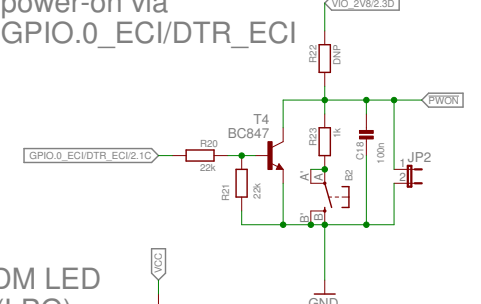
PWR LED



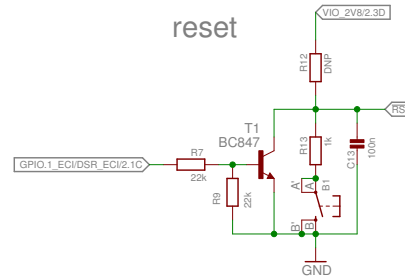
power-on via DTR



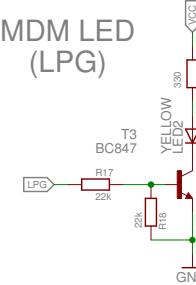
power-on via GPIO.0_ECI/DTR_ECI



reset



MDM LED (LPG)



GTM900 breakout board
(C) 2020 by
systocom s.f.m.c

GTM900-breakout	
6/4/20 5:17 PM	
Sheet: 1/2	v1

dual USB UART

audio i/o (1st channel)

